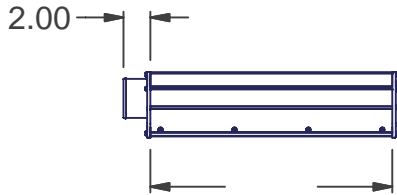


Air Knife Order Sheet

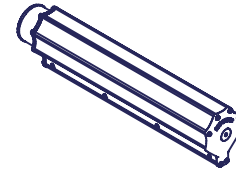
Material: Clear Anodize (CL)
 Stainless Steel (SS)
 Nickel Plated (N)
 Other _____

OD: 2"
 3"
 4"

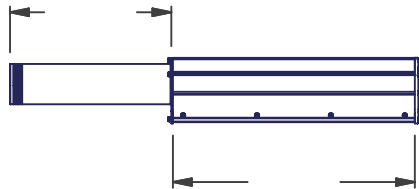
Gap _____



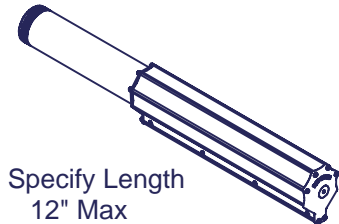
Std Inlet



Example (310-4018CL-SI)

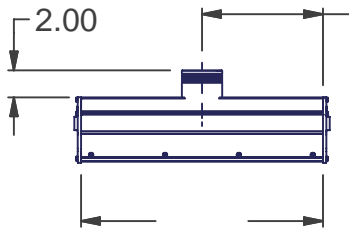


Std Ext Inlet

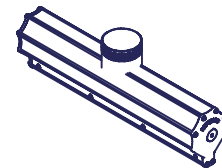


Example (310-4018CL-SEI-12)

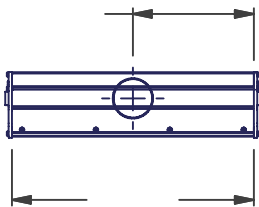
Specify Length
12" Max



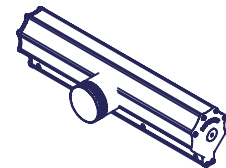
Top Mid Inlet



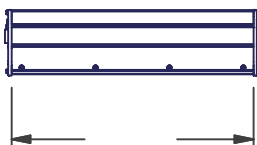
Example (310-4018CL-TMI)



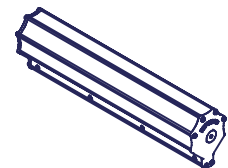
Side Mid Inlet



Example (310-4018CL-SMI)



No Inlets



Example (310-4018CL-NI)

Part Number Example 310-4216CL-SMI

312 - 2" Dia AK
 310 - 3" Dia AK
 314 - 4" Dia AK

CL = Clear Anodize
 S = Stainless Steel

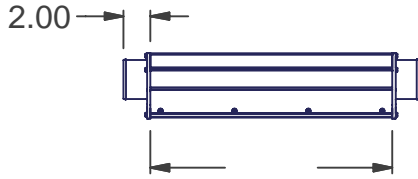
Air Knife Length (Max Length - 18ft)

Air Knife Order Sheet

Material: Clear Anodize (CL)
 Stainless Steel (SS)
 Nickel Plated (N)
 Other _____

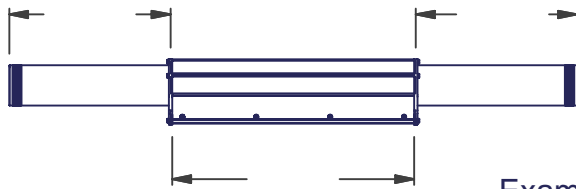
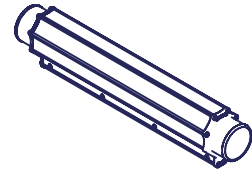
OD: 2"
 3"
 4"

Gap _____



Dual Inlet

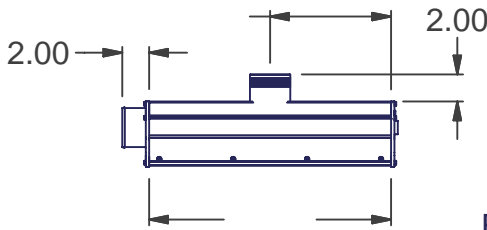
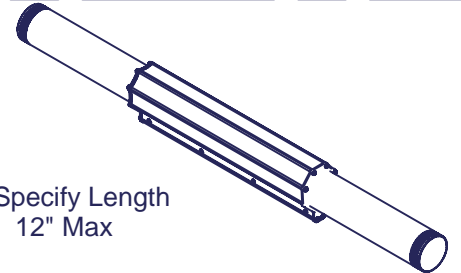
Example (310-4018CL-DI)



Dual Ext Inlet

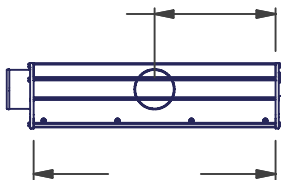
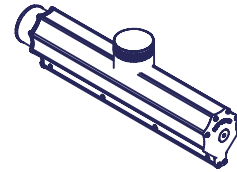
Example (310-4018CL-DEI-12)

Specify Length
12" Max



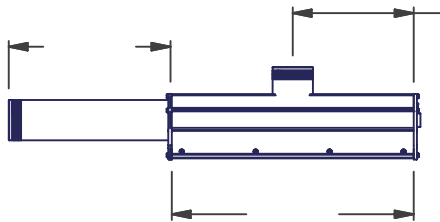
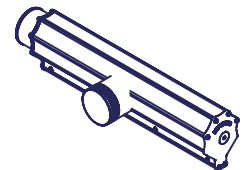
Dual Inlet with
End & Top Mid Inlet

Example (310-4018CL-DIE&TMI)



Dual Inlet
with
End & Side
Mid Inlet

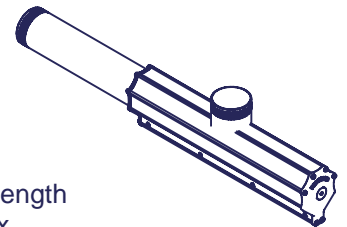
Example (310-4018CL-DIE&SMI)



Dual Inlet
with
Ext End & Mid
Top Inlet

Example (310-4018CL-DIE&TMI-12)

Specify Length
12" Max



Part Number Example 310-4216CL-SMI

312 - 2" Dia AK
 310 - 3" Dia AK
 314 - 4" Dia AK

SMI = Side Middle Inlet
 CL = Clear Anodize
 S = Stainless Steel

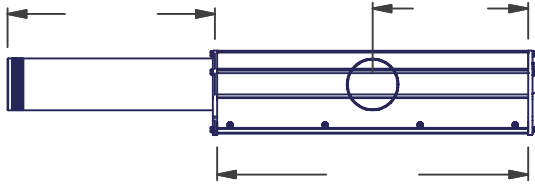
Air Knife Length (Max Length - 18ft)

Air Knife Order Sheet

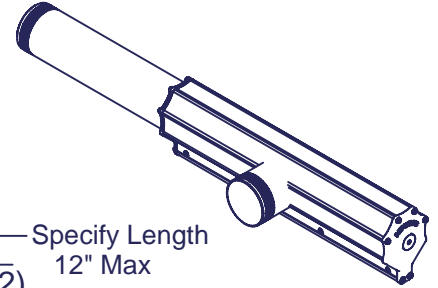
Material: Clear Anodize (CL)
 Stainless Steel (SS)
 Nickel Plated (N)
 Other _____

OD: 2"
 3"
 4"

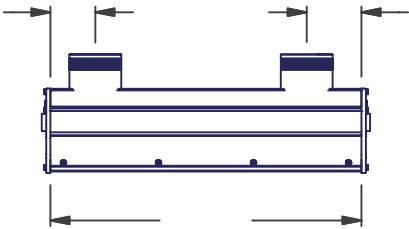
Gap _____



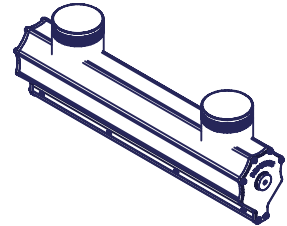
Dual Inlet
 with
 Ext End
 & Side
 Mid Inlet



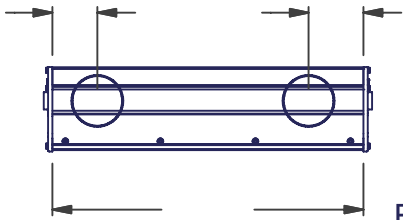
Example (310-4018CL-DIE&SMI-12)



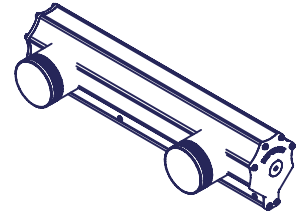
Dual Inlet
 with
 Dual Top
 Inlet



Example (310-4018CL-DIDTI)



Dual Inlet
 with
 Dual Side
 Inlet



Example (310-4018CL-DIDSI)

Part Number Example 310-4216CL-SMI

312 - 2" Dia AK

310 - 3" Dia AK

314 - 4" Dia AK

SMI = Side Middle Inlet

CL = Clear Anodize

S = Stainless Steel

Air Knife Length (Max Length - 18ft)