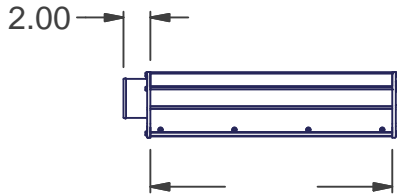
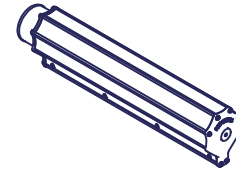


# Air Knife Order Sheet

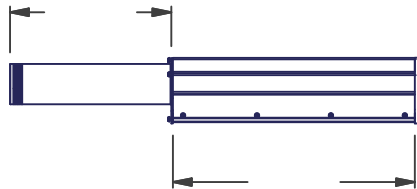
Material: Clear Anodize (CL)       OD: 2"       Gap \_\_\_\_\_  
 Stainless Steel (SS)       3"       Cust. Name \_\_\_\_\_  
 Other \_\_\_\_\_       4"       Cust. P.O. \_\_\_\_\_



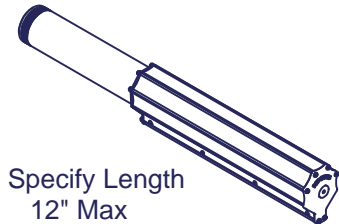
Std Inlet



Example (310-4018CL-SI)

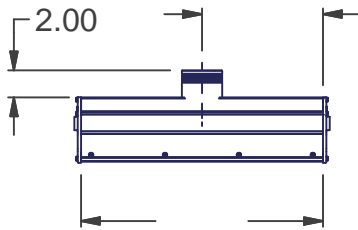


Std Ext Inlet

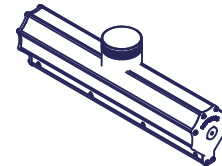


Example (310-4018CL-SEI-12)

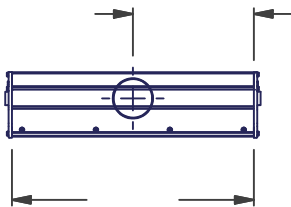
Specify Length  
12" Max



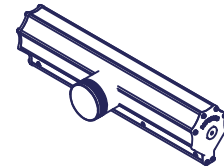
Top Mid Inlet



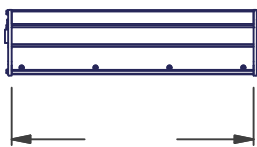
Example (310-4018CL-TMI)



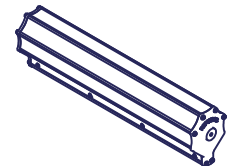
Side Mid Inlet



Example (310-4018CL-SMI)



No Inlets



Example (310-4018CL-NI)

Part Number Example 310-4216CL-SMI

312 - 2" Dia Inlet  
 310 - 3" Dia Inlet  
 314 - 4" Dia Inlet

SMI = Side Middle Inlet  
 CL = Clear Anodize  
 S = Stainless Steel

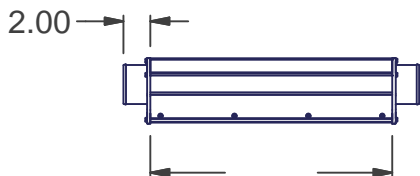
Air Knife Length (Max Length - 216")

# Air Knife Order Sheet

Material: Clear Anodize (CL)   
 Stainless Steel (SS)   
 Other \_\_\_\_\_

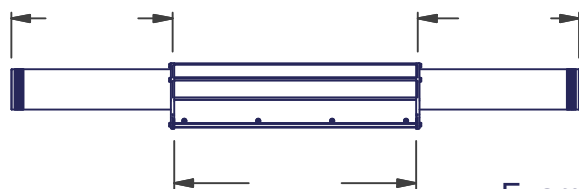
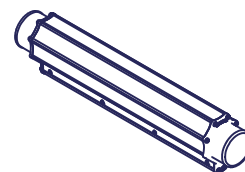
OD: 2"   
 3"   
 4"

Gap \_\_\_\_\_  
 Cust. Name \_\_\_\_\_  
 Cust. P.O. \_\_\_\_\_



Dual Inlet

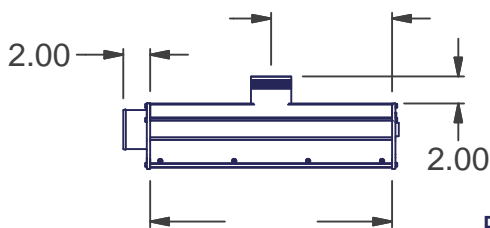
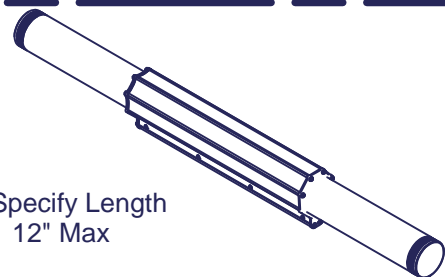
Example (310-4018CL-DI)



Dual Ext Inlet

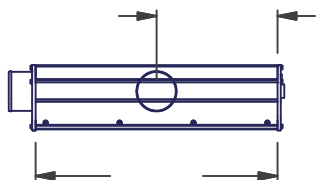
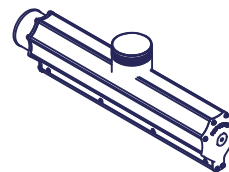
Example (310-4018CL-DEI-12)

Specify Length  
12" Max



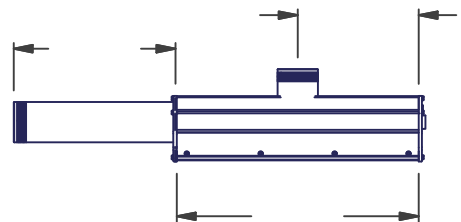
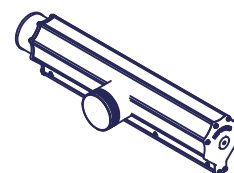
Dual Inlet with End & Top Mid Inlet

Example (310-4018CL-DIE&TMI)



Dual Inlet with End & Side Mid Inlet

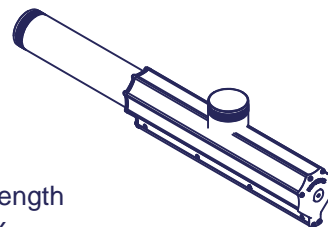
Example (310-4018CL-DIE&SMI)



Dual Inlet with Ext End & Mid Top Inlet

Example (310-4018CL-DIE&TMI-12)

Specify Length  
12" Max



Part Number Example 310-4216CL-SMI

312 - 2" Dia Inlet  
 310 - 3" Dia Inlet  
 314 - 4" Dia Inlet

SMI = Side Middle Inlet  
 CL = Clear Anodize  
 S = Stainless Steel

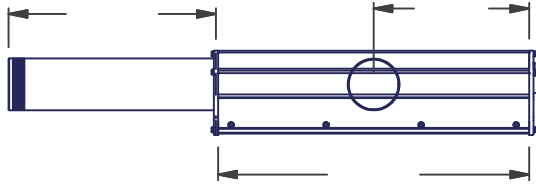
Air Knife Length (Max Length - 216")

# Air Knife Order Sheet

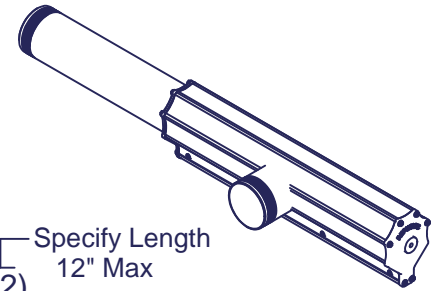
Material: Clear Anodize (CL)   
 Stainless Steel (SS)   
 Other \_\_\_\_\_

OD: 2"   
 3"   
 4"

Gap \_\_\_\_\_  
 Cust. Name \_\_\_\_\_  
 Cust. P.O. \_\_\_\_\_

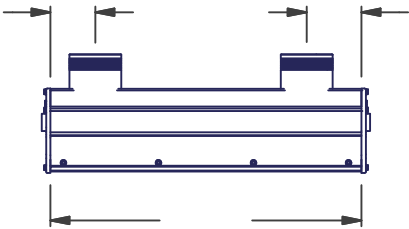


Dual Inlet  
 with  
 Ext End  
 & Side   
 Mid Inlet

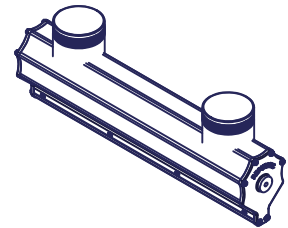


Example (310-4018CL-DIE&SMI-12)

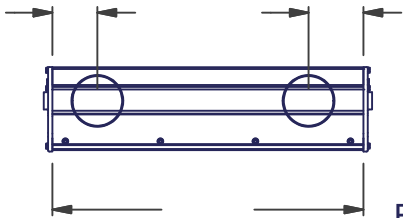
Specify Length  
 12" Max



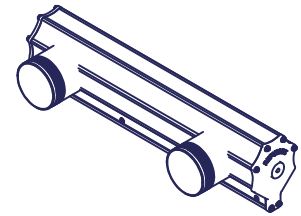
Dual Inlet  
 with  
 Dual Top   
 Inlet



Example (310-4018CL-DIDTI)



Dual Inlet  
 with  
 Dual Side   
 Inlet



Example (310-4018CL-DIDSI)

## Part Number Example 310-4216CL-SMI

312 - 2" Dia Inlet  
 310 - 3" Dia Inlet  
 314 - 4" Dia Inlet

SMI = Side Middle Inlet

CL = Clear Anodize  
 S = Stainless Steel

Air Knife Length (Max Length - 216")